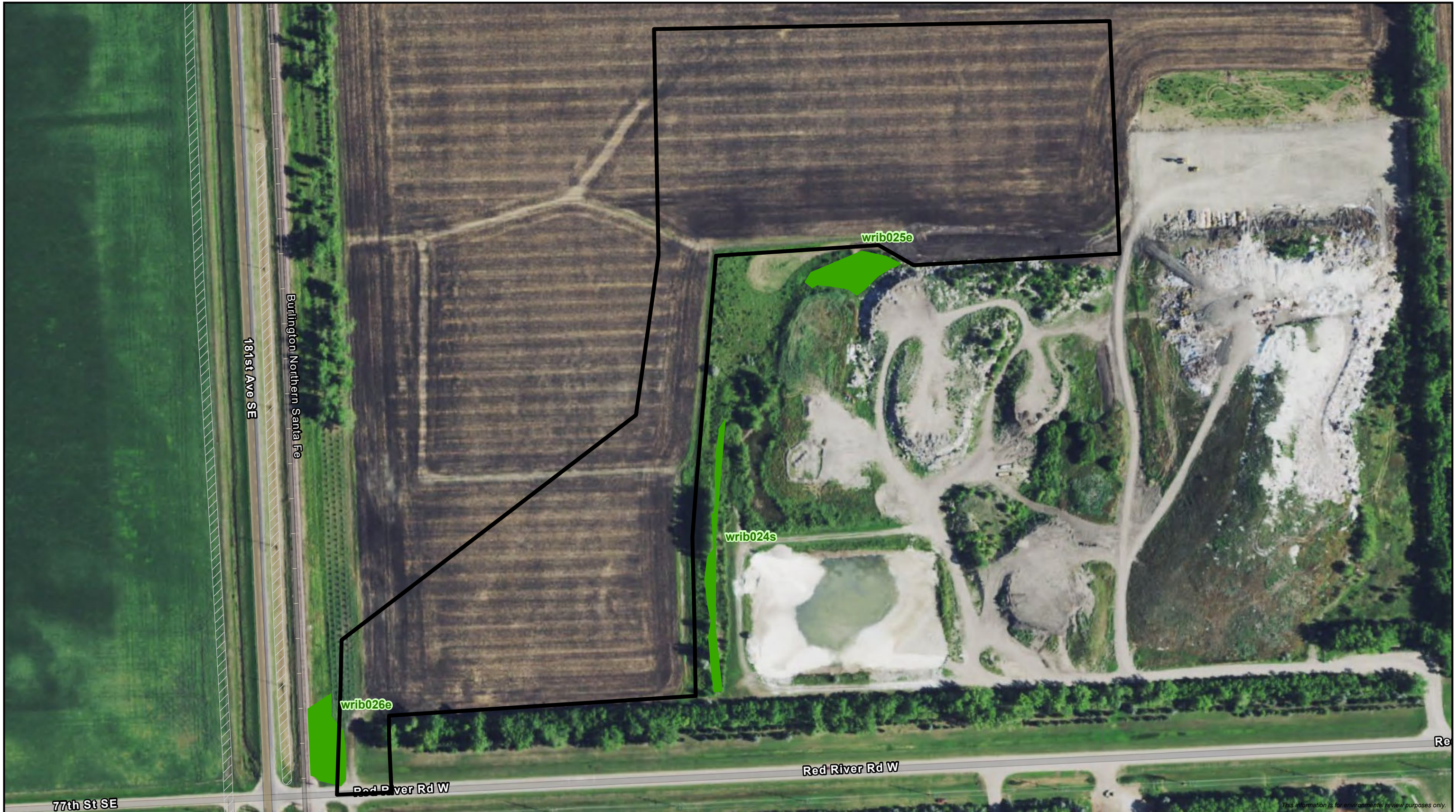
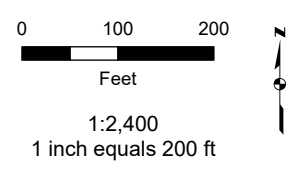


APPENDIX 1B AERIAL PHOTO BASED ALIGNMENT SHEETS
Continued



This information is for environmental review purposes only.



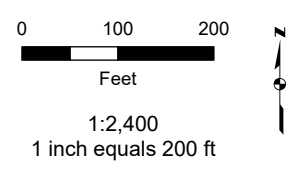
- Surveyed Wetland
- NWI Wetland
- Temporary Workspace

Wahpeton Expansion Project
Comstock North Yard
 Sec. 29, T133N, R47W
 Richland County, North Dakota
 (2021 NAIP Aerial Imagery)





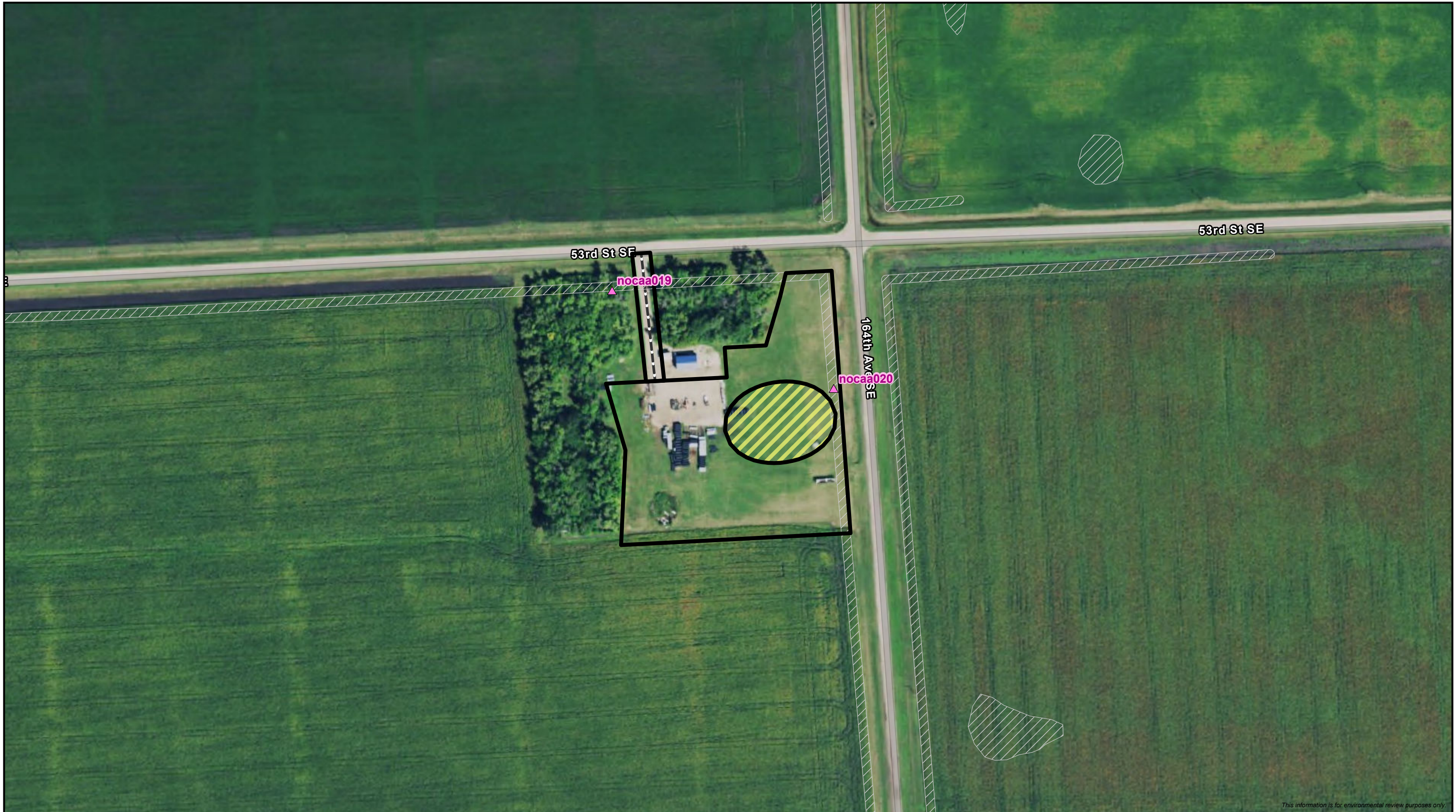
This information is for environmental review purposes only.



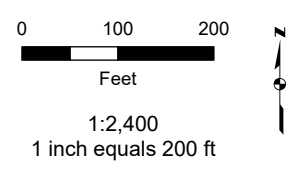
- Surveyed Wetland
- Temporary Workspace

Wahpeton Expansion Project
Comstock South Yard
 Sec. 8, T132N, R47W
 Richland County, North Dakota
 (2021 NAIP Aerial Imagery)





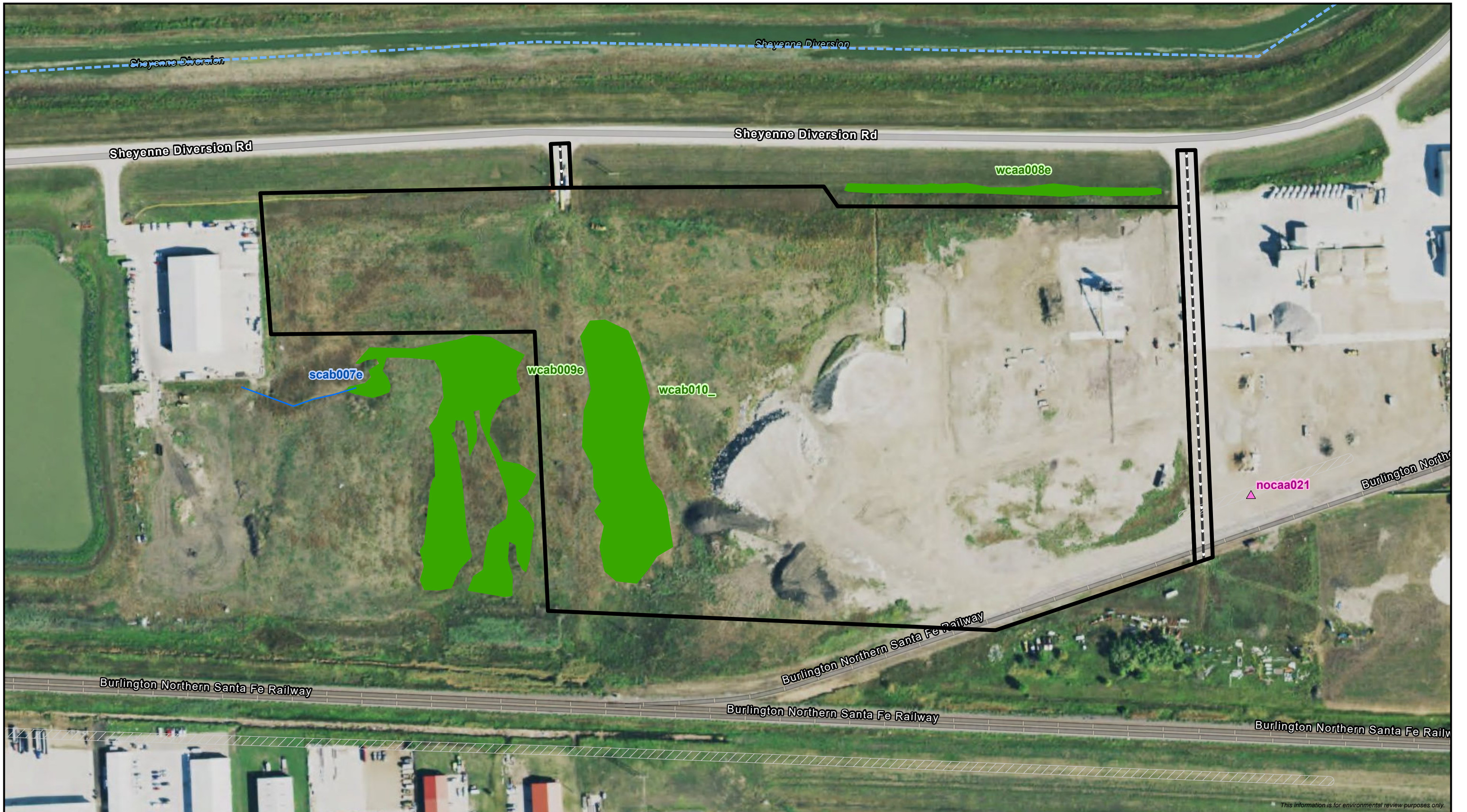
This information is for environmental review purposes only.



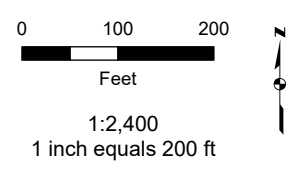
- ▲ Non-Water Data Point
- NWI Wetland
- Access Road
- Temporary Workspace
- Exclusion Area

Wahpeton Expansion Project
Kindred Yard
 Sec. 31, T137N, R50W
 Cass County, North Dakota
 (2021 NAIP Aerial Imagery)





This information is for environmental review purposes only.



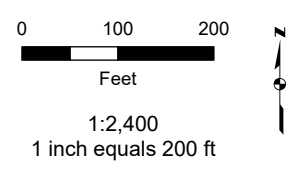
- ▲ Non-Water Data Point
- Surveyed Waterbody
- Surveyed Wetland
- NHD Flowline
- ▨ NWI Wetland
- Access Road
- ▭ Temporary Workspace

**Wahpeton Expansion Project
Kost Yard**
Sec. 6, T139N, R49W
Cass County, North Dakota
(2021 NAIP Aerial Imagery)





This information is for environmental review purposes only.



- Access Road
- Temporary Workspace

Wahpeton Expansion Project
Wahpeton City Yard
 Sec. 32, T133N, R47W
 Richland County, North Dakota
 (2021 NAIP Aerial Imagery)

